



McMinnville 100 Years Ago

Reflections On A Changing Way Of Life

Daily Life

About this project:

This particular project topic focuses on daily life of Yamhill County in 1912. As a group we have chosen to divide our project into different subject areas; churches, businesses, schools, recreation, and clothing. In order to learn about the daily life of Yamhill County, we analyzed historical evidence from Yamhill County in 1912 such as newspapers, pictures, and journals. These documents were found with help from the Yamhill County Historical Museum and the McMinnville Public Library. With this evidence, we crafted together a thorough portrayal on daily life of Yamhill County in 1912.

By: Lindsey Hacker, Ian Rapport and Louise Winsnes

Local Businesses

Main businesses

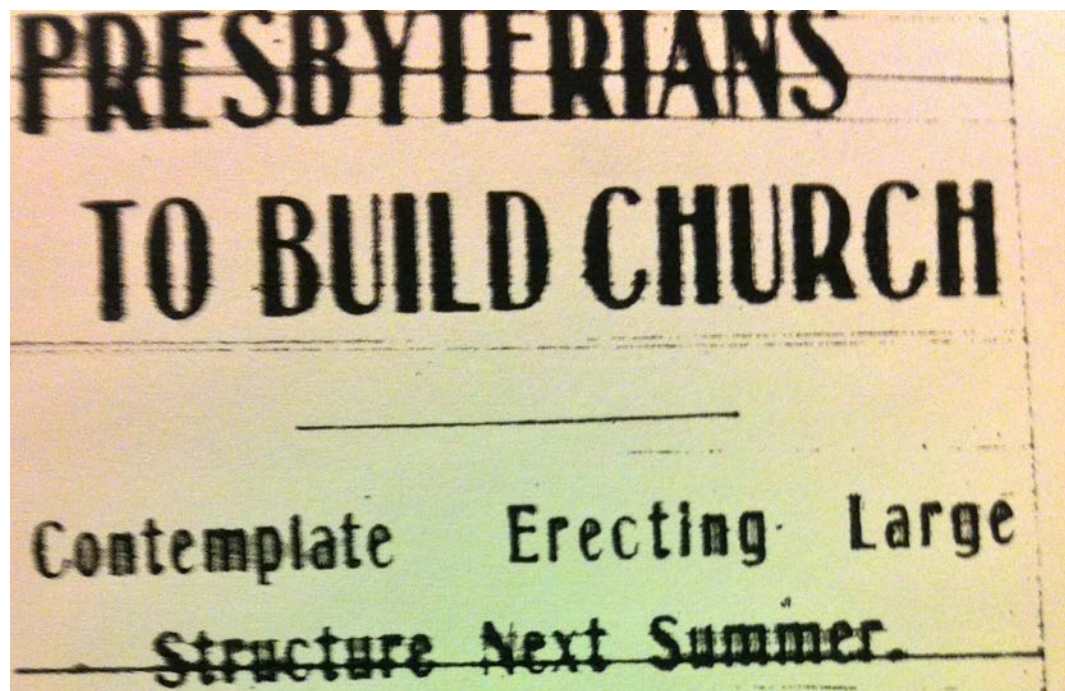
- F.L. Trullinger. General Merchandise- Where everyday items were sold.
- W.T. Macys Future Store had the largest supply of household future (which later became a funeral service.)
- Christensen Bros. Groceries (Local produce good such as fruit, starch, meats, vegetables, breads milk and foods for everyday meal prep.
- First National Bank- McMinnville's only full service bank opened in 1912 on East Main Street



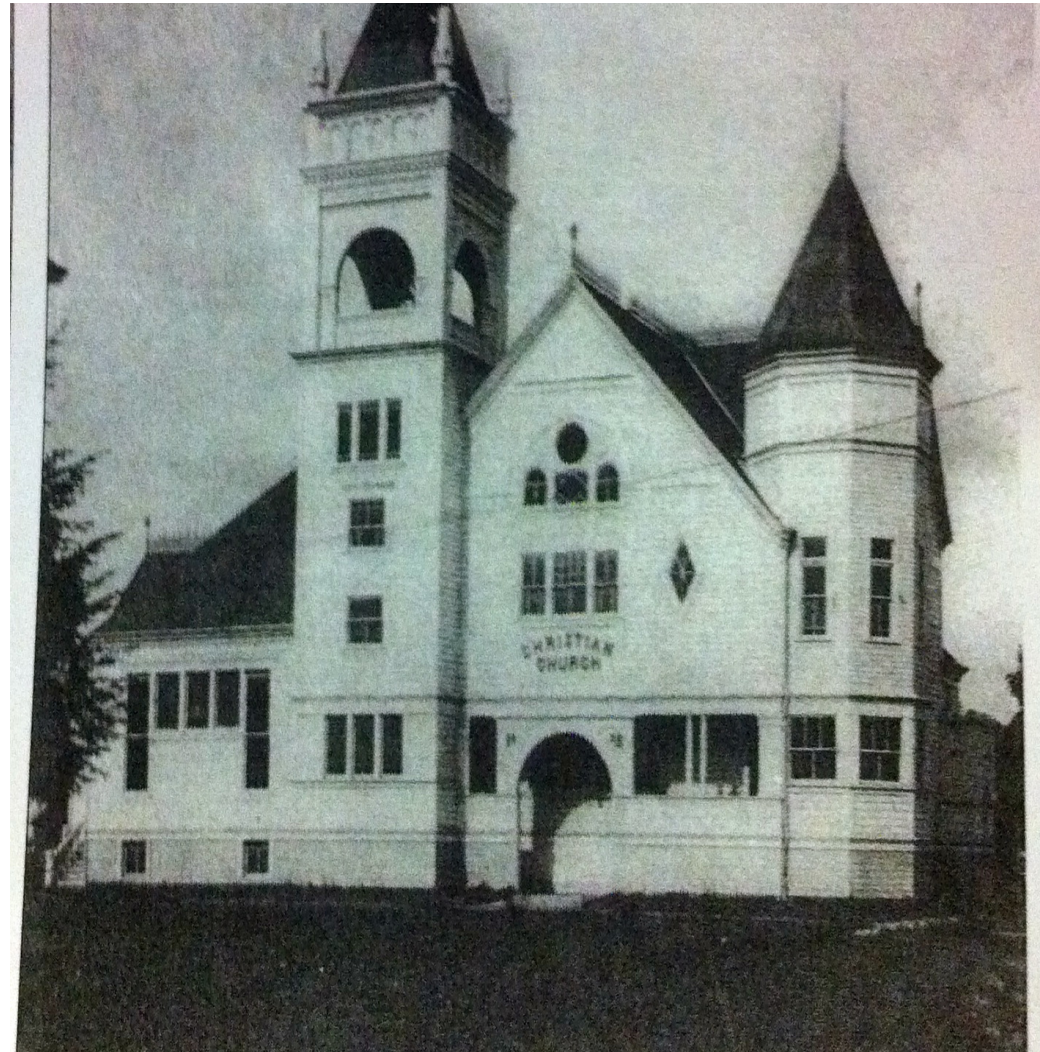
Third Street downtown McMinnville in 1912 the central location for most businesses.

Presbyterian Church

Completely Rebuilt in 1912 took two years to complete the project largest church in McMinnville at the time. The church building was rotated 90 degrees, and was kept on the back lot of the property. The basement was excavated, the present sanctuary was built, and the brick facing was added. Total cost to rebuild was \$8,000. It was big news to the community and members of the church.



Church Life



Christian Church

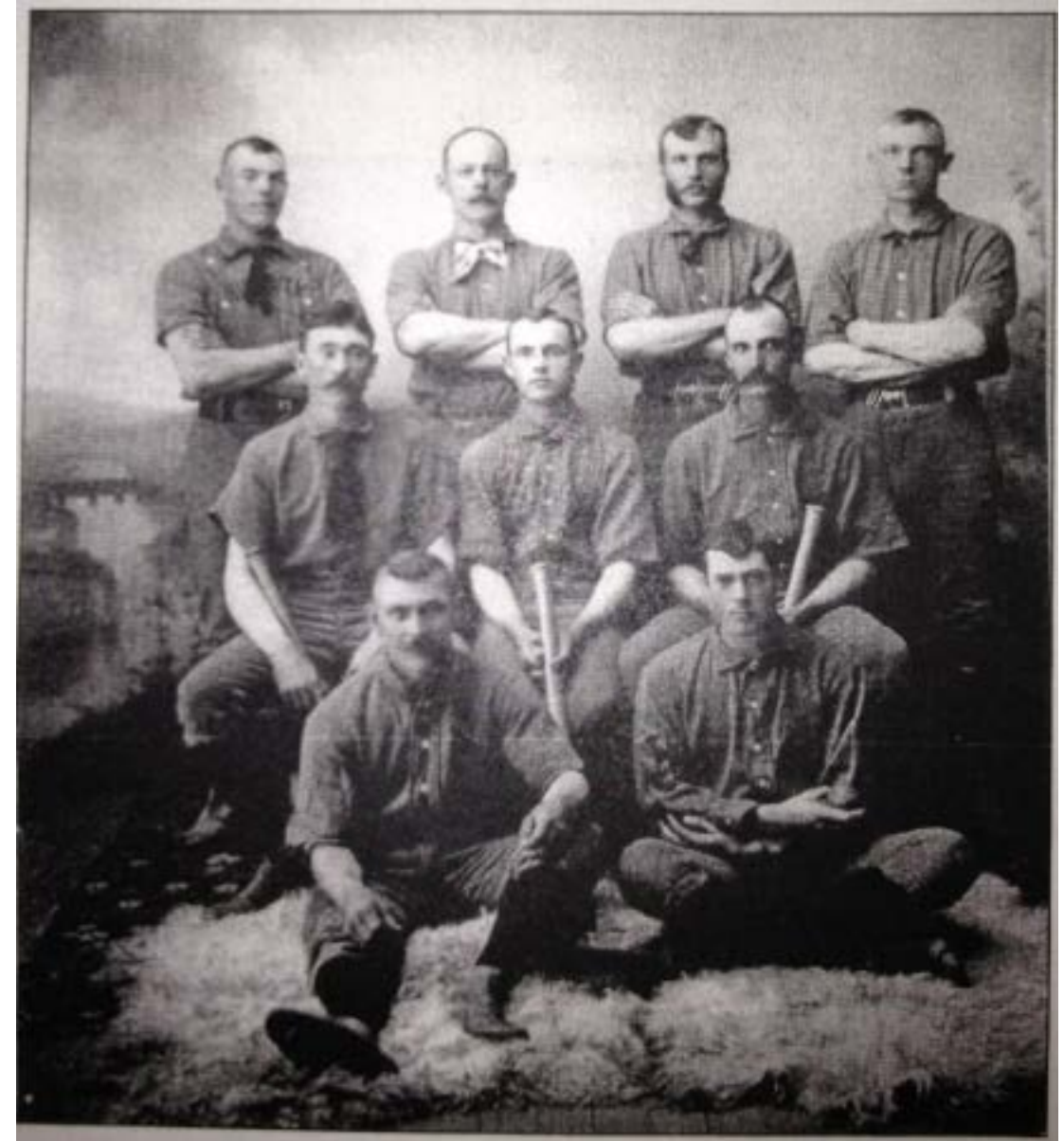
First Christian church built in McMinnville. Daily church activities included Song, Prayer, Scripture Lessons, Hymn and Announcement almost all promenade members of society were involved with church and it was every Sunday. Christianity in the 1900's was at the root of family values.



Recreation

Types of Recreation in Yamhill County

- Bands
- 4th of July – Yamhill County always celebrated 4th of July, where they would parade down various communities, with bands and float decorations.
- Library
- Public Parks
- Camping
- Baseball, the first baseball team in Yamhill County was at the McMinnville High school
- By the early 1900s, citizens started enjoying picnics and swimming by the Lafayette locks.



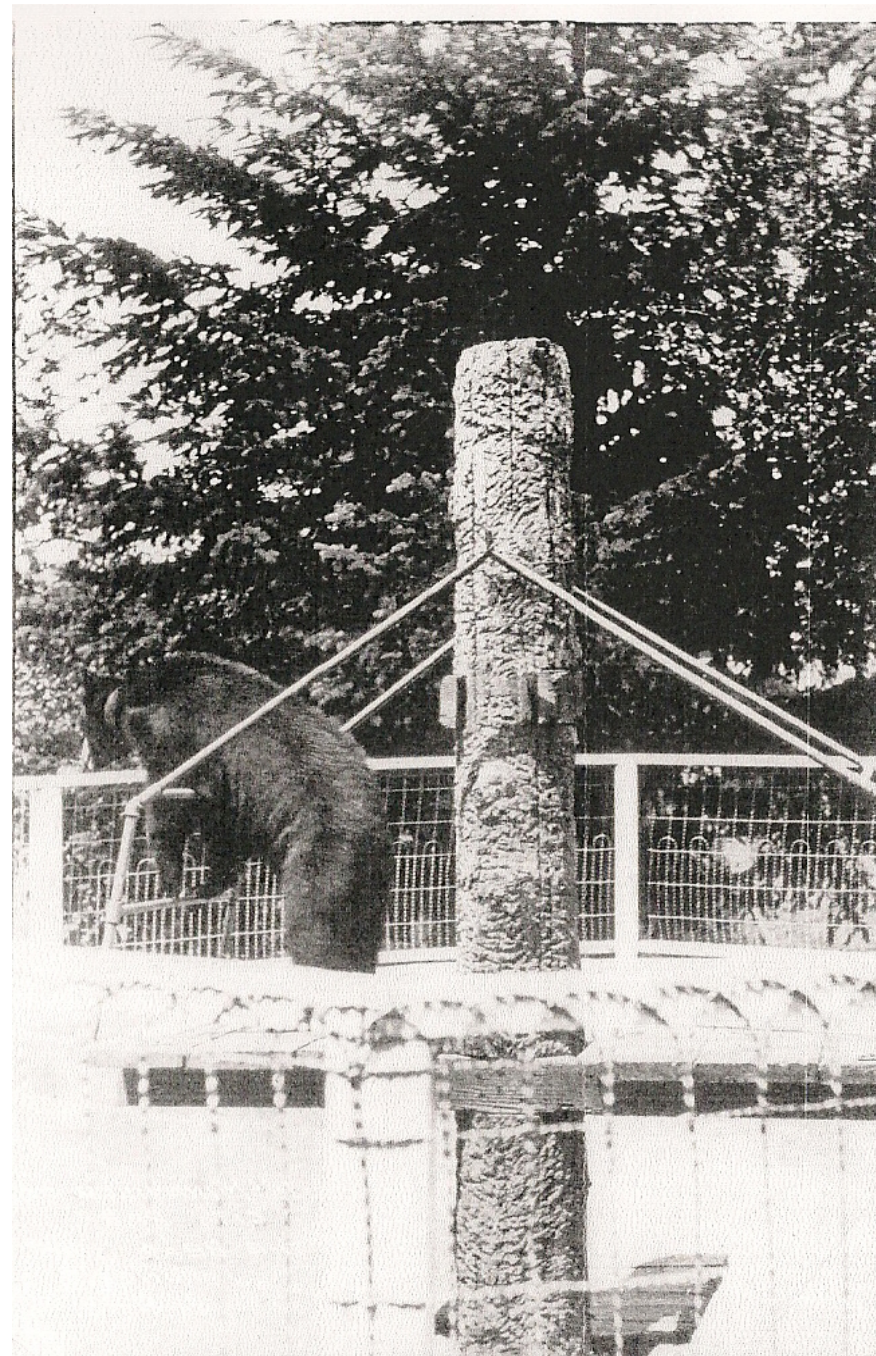
City Park

Creation

The City Park was created around 1910 with the help from two dozen prominent local families. The money was used to carve out Upper City Park. It included all of Upper City Park, extending down the hill to Cozine Creek.

The Pavilion

The Pavilion was built in 1908. It was the size of a large gymnasium and stood where the aquatics center is located. It was generally used for extracurricular activities. The Church rented the building for \$200 a month and the College played basketball for 75 cents a night. Most days young boys were allowed to play in the afternoon with supervision.



Park Improvements

In 1910, McMinnville sold \$3000 worth of park bonds to finance the construction of a bandstand, a pond and a zoo. The bandstand was eventually torn down in 1940 due to disuse.

City Park Zoo

The Zoo included bears, deer, and other animals. It became a popular attraction for visitors passing through town. The zoo was eventually dismantled in 1917. Some animals were sold to the local butcher shop and others were relocated.

Education

Elementary and High School Extracurricular

Many students participated in many extracurricular activities in elementary and high school. One particular strong point for local Cook School in McMinnville was the Orchestra. This young group of students performed publically on many occasions. In High School, students also participated in cooking classes.



STATE OF OREGON Questions for Eighth Grade Diplomas

MAY, 1910

GEOGRAPHY

- Oregon (select any two)—
 - What *natural* features bound Oregon?
 - What are its *political* boundaries?
 - Compare Oregon to size with the island of Great Britain.
- United States (select any two)—
 - What *natural* features bound the United States?
 - What are its political boundaries?
 - Name five *leading* productions, and state the parts of the United States in which they are mainly raised.
- South America—
 - Name the water boundaries.
 - In what part of South America are the following: Brazil, Uruguay, Valparaiso, Chile?
- Europe (select any two)—
 - What great country occupies most of Eastern Europe?
 - Switzerland has what form of government?
 - What country of Europe would you prefer to live in? Give three seasons.
- Climate (select any two)—
 - What is the difference between the *revolution* and *rotation* of the earth?
 - Name and locate the zones.
 - Explain the cause of winds.

McMinnville College, 1912



PRESIDENT L. W. RILEY

Who is gradually placing the home college on a sound financial basis, raising the standard of the curriculum and contributing much to the extension of the college's influence throughout the Pacific Northwest States.

McMinnville College

Now called Linfield College, McMinnville College would have a special section in the News-Reporter about the graduates. In June of 1912, ten students received their college degrees.



Clothing

During 1912, women were mainly seen wearing pure white dresses, covered in lace and sheer material. Little skin was revealed in these dresses, which meant that they flowed down to the floor, were long-sleeved and had high neck lines.



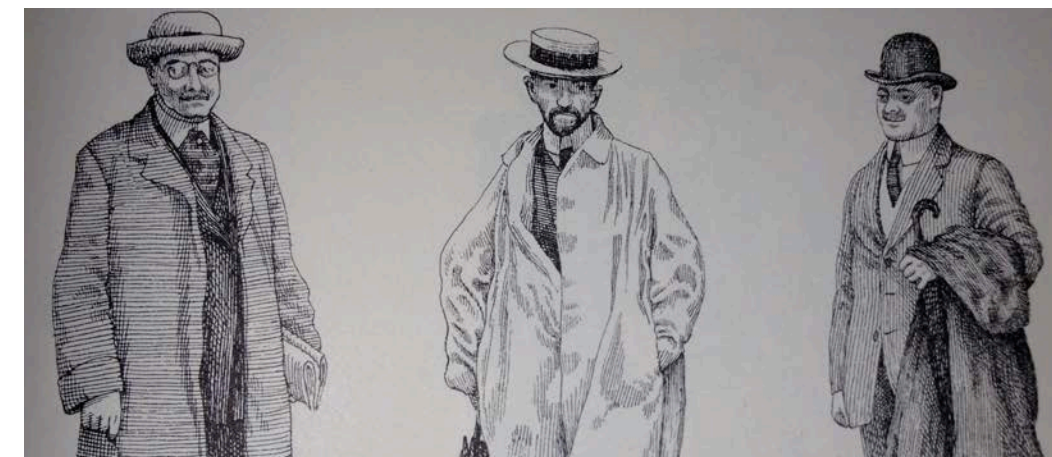
Accessories:

- Leather handbags were known to be good quality and typically had stiff shaped handles.
- Hats were worn on sunny days, however the size of these hats dramatically decreased in size by 1912.

Charming cool white dresses were extremely popular during the afternoon. The dresses were known for its exquisite embroidered needlework.

Women could order fabric patterns from the local news-paper so that they would be able to sew fashionable clothing.

Lounge suits were common wear for men during the 1900s. They were usually of grey flannel or narrow-striped materials. The style of double-breasted jackets change slightly in 1912, where the waist was slightly lowered below the natural level, and less buttons were found on the side of the jacket. By 1912, peg-topped trousers came back into fashion from the mid nineteenth century.



Conclusion

Daily life over the last 100 years has drastically changed, however, it is safe to conclude that there are still some remnants from the past. Although most of the mentioned businesses of Yamhill County no longer exist, many of its buildings still stand. The Presbyterian Church and The First Christian Church still run to this day. Education has developed due to the rise of population. Today Linfield graduates hundreds of students each year compared to the ten in 1912. Many similarities can be seen with today's recreational activity, such as celebrations, parades, and the use of the public park. Even though lace for women may be back in fashion, and suits still around for men, fashionable progressions have been made since 1912. Daily life in Yamhill County began to flourish in the early 1900's and continues to grow to this day.



References Consulted

- McMinnville Public Library
- Yamhill County Historical Society & Museum
- News- Register