

2010

## 2009-2010 President's Report

Mardi Mileham  
*Linfield College*

Laura Davis  
*Linfield College*

Follow this and additional works at: <https://digitalcommons.linfield.edu/presreports>

---

### Recommended Citation

Mileham, Mardi and Davis, Laura, "2009-2010 President's Report" (2010). *Presidential Reports*. Report. Submission 3.

<https://digitalcommons.linfield.edu/presreports/3>

This Report is protected by copyright and/or related rights. It is brought to you for free via open access, courtesy of DigitalCommons@Linfield, with permission from the rights-holder(s). Your use of this Report must comply with the [Terms of Use](#) for material posted in DigitalCommons@Linfield, or with other stated terms (such as a Creative Commons license) indicated in the record and/or on the work itself. For more information, or if you have questions about permitted uses, please contact [digitalcommons@linfield.edu](mailto:digitalcommons@linfield.edu).



## President's Report

2009-10

### Welcome from the President



I am proud to report on the 2009-10 academic year at Linfield College. As the year began, we worried about the economy and its effect on our enrollment, our fundraising and our endowment. At many other institutions across the country, programs and staff were cut or reduced. But at Linfield we held firm as a college and a community and maintained all of our programs and staff – and we extended our streak of balanced budgets to 36 consecutive years.

Although our freshman class was slightly smaller than usual, it was academically outstanding, and we were able to provide significant financial aid despite the bad economy. Our baseball, softball and football teams all finished second or third in the nation. Four of our graduating seniors were awarded prestigious Fulbright Scholarships. Professor Peter Richardson was named the Oregon Professor of the Year. And we had our best fundraising year since 2002-03, when Linfield celebrated its campaign to acquire and build the Keck Campus; thanks to the generosity of trustees, alumni, parents and friends, Linfield College received more than \$7.6 million in gifts, grants and bequests in the fiscal year that ended on June 30.

These results would be impressive in any year. But in 2009-10, when unemployment remained stubbornly high and foreclosure rates soared, these results were truly great. They stemmed from the hard work of many people, but also from the generosity of our friends and allies. The power of a Linfield education was manifested in many ways last year; ultimately, however, we saw that the power of our small college comes from our community, both on campus and beyond. And so, to that Linfield community, on behalf of our students, present and future, I thank you.

*Thomas L. Hellie*  
President

Choose from the report topics listed at left to view the President's Report.



## President's Report

### Academic Achievements in 2009-10

#### Introduction



The academic year 2009-10 saw a number of important achievements at Linfield College with faculty and students receiving national and international recognition. Six students won national fellowships (four Fulbright grants, the Udall Fellowship and the Boren Award), while Linfield students received national or international awards in theatre, creative writing, nursing and education. Over 40 students attended or presented their own scholarly work at regional, national and international conferences while several students published their work in scholarly journals.

Twenty-five faculty, across all disciplines, earned regional, national or international honors for their teaching, mentoring and scholarly work, not least of whom – Dr. Peter Richardson – was selected as the Oregon Professor of the Year in the National Professor of the Year recognition process. Linfield-Good Samaritan School of Nursing received honorable mention from Excelencia in Education for its extraordinary outcomes in recruiting and mentoring multicultural nursing students. More than 30 faculty published books, articles or chapters, 35 gave regional, national or international presentations of their scholarly work and 13 received grants to support their scholarly activities. Classrooms have been upgraded with cutting-edge technology and the Portland and McMinnville Campuses have been linked through two high-definition teaching spaces. Many strategic and exciting suggestions emerged from the Portland Task Force that are already under development, while the DCE Task Force and the Linfield Curriculum Assessment Task Force proposed important self-assessment tasks for the college in the coming years.

*Victoria McGillin*

*Vice President for Academic Affairs/Dean of Faculty*



**I love being a witness to the spectacle in my classes and having some hand in the direction the students take. I love suggesting things to them they might not have thought of before.**

*Peter Richardson, professor of German and Oregon Professor of the Year*

**At Linfield, you could not escape by sitting in the back of the class. Professors knew the name of every student and they cared about all. If you were having a hard time, they pulled you aside. If it were not for the caring professors and staff, I would not have survived.**

*Alumni comment from perception research, underscoring “The Power of a Small College”***New faculty appointments**

Kena Avila-Foster, assistant professor of education  
 Marita Barth, visiting assistant professor of chemistry  
 Robert Fox, visiting assistant professor of nursing  
 Olivia Harrison, assistant professor of French and francophone studies  
 Anne Heenan, assistant professor of nursing  
 John Humrichouse, visiting assistant professor of psychology  
 Carmen Kellogg, assistant professor of nursing  
 Karen Maxwell, assistant professor of nursing  
 Daniel Pollack-Pelzner, assistant professor of English  
 Madeline Romero, visiting associate professor of business  
 Miriam Volpin, visiting assistant professor of nursing  
 Sharon Wagner, professor and chair of Business  
 Jeremy Weisz, assistant professor of biology  
 Daniel Williams, visiting assistant professor of biology  
 Suchawadee Yimmee, assistant professor of nursing

**Tenure awarded**

Daniel Ford, computer science  
 Kathy Kinderman, nursing  
 Robert Gardner, sociology  
 Jesús Ilundáin-Agurruza, philosophy  
 Mindy Legard Larson, education  
 Barbara Limandri, nursing  
 Jeff McNamee, health and human performance  
 Eric Schuck, economics

**Promoted to associate professor**

Robert Gardner, sociology  
 Jesús Ilundáin-Agurruza, philosophy  
 Mindy Legard Larson, education  
 Jeff McNamee, health and human performance

**Promoted to full professor**

Barbara Limandri, nursing  
 Eric Schuck, economics  
 Martha Van Cleave, mathematics

**Sabbaticals awarded**

Federico Calixtro, nursing  
 Thierry Durand, modern languages (French)  
 Richard Emery, business  
 Robert Gardner, sociology and anthropology  
 Sharon Bailey Glasco, history  
 Dawn Graff-Haight, health and human performance  
 Kay Livesay, psychology  
 Thomas Love, sociology and anthropology  
 Ron Mills, art and visual culture  
 Robert McCann, education



Martin Dwomoh-Tweneboah, computer science  
Tianbao Xie, physics

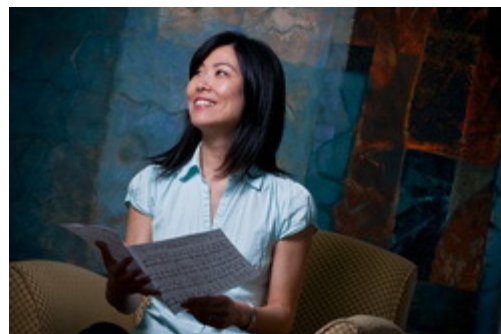
### Retirements



Ken Ericksen, professor of English, 45 years  
Dave Hansen, vice president of Student Affairs and dean of students, 22 years  
Donna Routh, associate professor of nursing, 25 years  
Barbara May, professor of nursing, 21 years

### Awards and honors

- Nicholas Buccola, assistant professor of political science, Samuel H. Graf Faculty Achievement Award
- Patrick Cottrell, assistant professor of political science, Allen and Pat Kelley Faculty Scholar Award
- Garry Killgore, professor of health and human performance, Edith Green Distinguished Professor Award
- Brenda Marshall, professor of theatre and communication arts, was honored for her contributions to Northwest forensics when the Northwest Forensics Conference established the Brenda DeVore Marshall Sweepstakes prize, awarded for the first time this year.
- Amy Orr, associate professor of sociology, was recognized in June 2009 for outstanding leadership by the Council on Undergraduate Research.
- Lex Runciman, professor of English, recently had two of his books selected by Oregon readers, the editors of *Poetry Northwest*, and by librarians at the Oregon State Library (Salem) for inclusion in the Oregon 150 Poetry Book List, which identifies "150 outstanding Oregon poetry books — one for each year of statehood." Barbara Drake, professor emeritus of English, has two books on that list as well.
- Anna Song, assistant professor of music, and the Linfield Concert Choir received an invitation to perform for the Vaughan Williams Festival on Orcas Island, Wash.
- Vivian Tong, professor of nursing, and Mike Leahy, adjunct professor of health sciences, represented Linfield College last fall at the ASEAN Humanizing Health Care Conference and delivered invited lectures at Guangxi Medical University in Nanning, China.
- Lisa Weidman, assistant professor of mass communication, published "Homophobia, Heterosexism, and Ambivalence" in the premier issue of *Sports Illustrated Woman|Sport, in Sexual Sports Rhetoric: Global and Universal Contexts*, edited by In L.K. Fuller, Peter Lang Publishing, Inc.



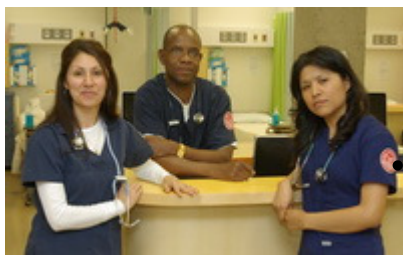
### Faculty books

- Reshmi Dutt-Ballerstadt, assistant professor of English, had her book, *The Postcolonial Citizen: The Intellectual Migrant*, published by Peter Lang Publishing, Inc.
- Kate Bemis, dean of Division of Continuing Education; Janet Gifford, associate director of DCE; and Richard Pelletier of LucidContent.com coauthored *Transformations: A Guide to Online College for Adults*, a comprehensive view of the online college environment.

### Program notes



- The Linfield-Good Samaritan School of Nursing received \$120,000 for scholarships from the Robert Wood Johnson Foundation through the RWJF New Careers in Nursing Scholarship Program.



Linfield College launched an accelerated online RN to BSN degree for registered nurses across the country. Registered nurses can complete Linfield's RN to BSN degree in 15 months. Previously, this program took 20 months.

- The Linfield-Good Samaritan School of Nursing received an honorable mention from Excelencia in Education for its success in increasing the number of Hispanic nurses in the workforce. The overall percent of Hispanics enrolled in the nursing program jumped from 1.6 percent in 2003 to 8.8 percent in 2009.

### Student honors

- [Ansley Clark '10](#) was a finalist for the Hollins University Undergraduate Poetry Prize and earned the Best Imaginative Writing Award at the Northwest Undergraduate Conference for Literature at the University of Portland.
- [David Kellener-Rode '12](#) received one of 80 Udall Foundation Scholarships, given to students who demonstrate a commitment to careers focused on promoting environmental sustainability.
- Ashley Bennett '10 was awarded a Fulbright English Teaching Assistantship in Germany.
- [Krista Foltz '10](#) was awarded a Fulbright grant to study and conduct research in Chile.
- [Lily Niland '10](#) was awarded a Fulbright grant to study and conduct research in Peru.
- [Brett Tolman '10](#) was awarded a Fulbright to teach English in Sri Lanka.
- Andrew Webber '10 and Matt Davies '10 were accepted into master's degree programs in religion at Yale University. They join two other Linfield graduates accepted last year.
- [Leah Sedy '11](#) was awarded a Boren scholarship to study at the Center for Japanese Language and Culture at Doshisha University in Kyoto, Japan.
- Nadia Abraibesh '10 was awarded an internship in the Mental Health Policy Program at the Carter Center in Atlanta, Ga.



More on [academics](#)

More on [faculty recognition](#)



## President's Report

### Student Life and Athletics in 2009-10

#### Introduction

Linfield College continues to provide experiences engaging students beyond the classroom. This was an exceptional year for our students, who were engaged civically in the McMinnville and broader communities. Spring break service trips and "Service Saturday" opportunities continue to be popular with our students who understand the importance of giving back. President Obama's Higher Education Community Service Honor Roll recognized Linfield College again in 2009 for outstanding community service. Students developed and expanded their leadership skills in student government, residence life, and in multiple clubs and other student organizations. Our intercollegiate athletes excelled, with three teams finishing in the top three in the nation: football, softball and baseball. Other individual student athletes garnered All-American status in track and field.



*Dave Hansen,  
Vice President for Student Affairs  
Dean of Students*



**Linfield has provided a very safe, comfortable environment for me to figure myself out, pick a direction, and go for it. I've made really good friends, and met really great educators, all of whom are extremely supportive. I don't feel like I'm on my own as I try to figure out what I want to do with my life.**

*Matthew Statz '10*

**What makes school great is the ability to be involved in activities outside of the classroom. That is where students learn the most - commitment, communication, responsibility to a club/team/organization, volunteerism, etc. Having time outside of class to grow and learn is a very important aspect of college.**

*Comment from perception research, underscoring "The Power of a Small College"*

#### Student life at Linfield



[honorarys](#)

-

[Clubs and organizations](#)

50+

-

[Campus media groups](#)

4 – KSLC radio, The Linfield Review, Wildcat Productions and CAMAS literary magazine

-

[International Programs](#)97 students took part in semester or year-long programs  
127 studied off campus during January Term

-

[Residence Life](#)

24 residence halls and various apartment-style living accommodations

-

[Student government](#)

The Associated Students of Linfield College (ASLC), Linfield's student governing body, provides social, cultural, athletic and recreational activities as well as opportunities for leadership development.

-

[Career services](#)

The one-stop connection to the workplace, local and global community, and graduate school

-

[Community service](#)

More than 1,000 Linfield students volunteered 25,000 hours \*

\* Linfield was named to the 2009 President's Community Service Honor Roll for outreach to disadvantaged youth and the homeless, with more than 1,000 students volunteering last year.

**A range of student achievements**

- Lily Niland '10 and Leah Sedy '12 were honored at the [14th annual Toyama Cup Japanese Speech Contest](#), sponsored by the Toyama Prefectural Government and the Japan-America Society of Oregon.
- 26 students volunteered 1,025 hours of service during [Alternative Spring Break](#), working on eight homes at the Habitat Collegiate Challenge in Tacoma, Wash., and partnering with local areas and developing a bicycle parking area with the Northwest Sustainability Challenge.
- The student sustainability group Greenfield partnered with the local municipality McMinnville Water & Light to develop the ["Light Up McMinnville" campaign](#). The project raises \$2 for each CFL bulb directly installed in the



- community.
- Nursing student Christina Perez-Camarillo '13 was selected for participation in the [National Hispana Leadership Institute](#) in Washington, D.C.
- Eight Linfield nursing majors were elected to the 2010-11 Oregon Student Nurses Association Board of Directors, including Elizabeth Diaz '12, who was elected vice president.

View our [student profile](#)

Find us on [U-CAN](#)

More on [student life at Linfield](#)

### Athletes at Linfield

Intercollegiate varsity athletic teams	19
Number of intercollegiate athletes	473
Percentage of athletes on Dean's List	13%
Percentage of students in intercollegiate athletics	27%

### Championships highlights

**Football:** Won 12 consecutive games on the way to reaching the NCAA semifinals before bowing out to the eventual national champion

**Softball:** Seventh straight NWC championship, placed second at NCAA national tournament

**Baseball:** NWC title, placed third at NCAA national tournament

**Cross country:** Marci Klimek '10 finished 17th at the NCAA cross country championships

**Track and field:** Two athletes, Josh and Jeremy Lovell, both '10, placed second and ninth respectively in the men's decathlon at NCAA championships



### Athletic academic honors

- ESPN The Magazine Academic all-District honorees include Scott Millenbach '10, football; Samantha Lau '12, volleyball; Cole Bixenman '11, baseball; and Dominic Rieniets '10, men's swimming.
- The United States Track and Field and Cross Country Coaches Association honored students for academic achievement including Shawn Fisher '10, Francis Corcorran '10, Marci Klimek '10 and Nelly Evans '12.
- The [New York Times cheered Linfield's](#) scholar athletes before their semifinals championship football game.

[More on athletics at Linfield](#)



## President's Report

### Enrollment in 2009-10

#### Introduction

The 2009-10 year was a good year for enrollment at Linfield College, given the economic turmoil that students and families faced during the year. The college enrolled more than 2,500 students for the ninth consecutive year. A slightly smaller entering class at the McMinnville Campus was offset by higher headcount enrollments at the Portland Campus and in the Adult Degree Program. Students came from 25 states and 30 countries. Over 20 percent of the college's total enrollment was either U.S. citizens from ethnic minority backgrounds or international students. Since 2005, the percentage of students from Hispanic backgrounds has doubled, from 2.6 percent to 5.2 percent. This change is the result of special efforts in Portland to increase the number of Hispanic nurses and in McMinnville to serve the local Hispanic community through outreach and special initiatives.



*Dan Preston '83*  
*Vice President for Enrollment Management*

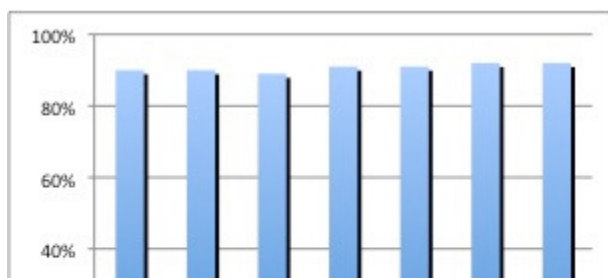


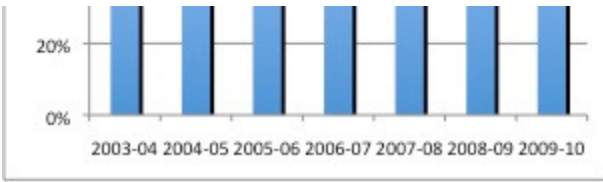
**I take every opportunity to tell potential students about Linfield. Knowing you can help pave the path for a student that will lead them towards a higher education, towards their dream, is an empowering feeling.**  
*Crystal Galarza '13*

**I want a college that will push me to be the very best I can be. I want professors who will challenge me, sports and activities to engage me and off-campus learning to broaden my mind.**

*Student comment from perception research, underscoring "The Power of a Small College"*

#### Percentage of students receiving financial aid from 2003 through 2010

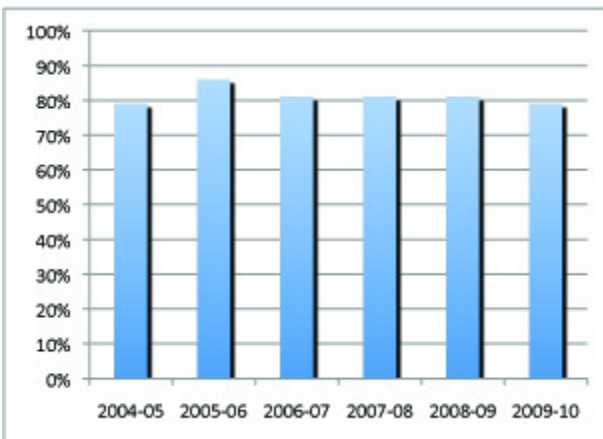


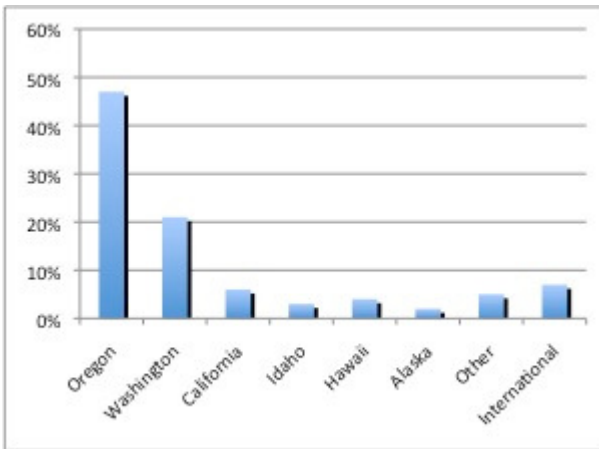


**McMinnville Campus**

Enrollment	1,677
Student-to-faculty ratio	12:1
Percentage of graduates who studied abroad	52%
Total funds awarded in scholarships	\$23,205,326
Number of students in scholarship competition	209
Average financial aid award	\$24,335
Percentage of students receiving financial aid	93%
Applications for admission	1,861
Freshman enrollment	422
Transfer students enrolled	62
Retention rate from freshman to sophomore year	81%
Average GPA of incoming freshmen	3.55
Average SAT score of incoming freshmen	1080
Number of incoming freshmen in top quarter of class	69%
Percentage of freshmen who are legacy students	19%
Percentage of first-generation college freshmen	13%
Percentage of multi-cultural students	17%
Percentage of out-of-state students	42%
Percentage of international students	7%
Total number of graduates	352
Number of students participating in community service activities	More than 1,000 students donated 25,000 hours

**Freshman-sophomore retention rates between 2004 and 2010**



**Home states of incoming freshmen in 2009****Portland Campus**

Enrollment	351
Student-to-faculty ratio	10:1
Percentage of multi-cultural students	23%
Male	12%
Second degree students	38%
Percentage of students receiving financial aid	100%
Average financial aid award	\$31,071
Total number of graduates	166

**Division of Continuing Education**

Enrollment	503
Percentage of students receiving financial aid	51%
Average financial aid award	\$9,750
In-state students	86%
Number of states represented	25
Male/female students	26%/74%
Percentage of multi-cultural students	9%
Average age	38
Total number of graduates	153



## President's Report

### Finances in 2009-10

#### Introduction

On June 30, 2010, for the 36th year in a row, Linfield College completed the fiscal year with a balanced budget. Through careful stewardship of revenue from tuition and fees, room and board charges, annual gifts, endowment earnings, and the use of campus facilities for summer camps and conferences, we are able to offer an outstanding education at a competitive price. In spite of significant national economic challenges, Linfield College remains financially very healthy. The financial reports below are based on preliminary unaudited figures.

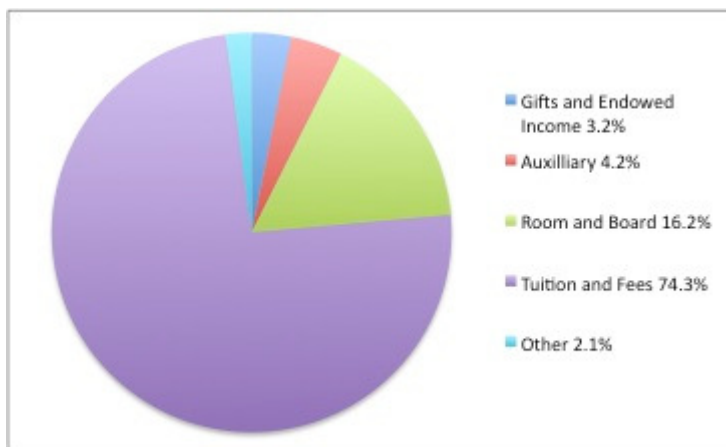
*Glenn Ford*  
 Vice President for Finance and Administration



#### Budget in 2009-10

Operating revenues (unaudited; audited figures available in November)	\$53.3 million
Operating expenses (unaudited; audited figures available in November)	\$52.3 million

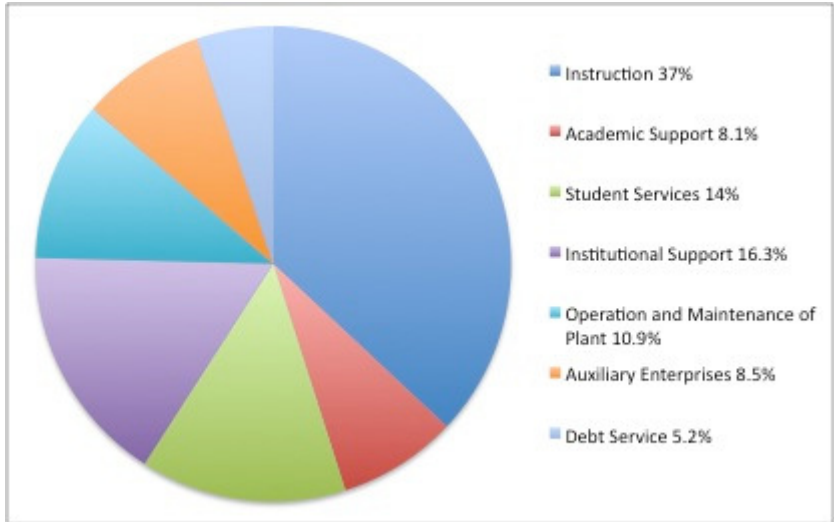
#### 2009-10 Sources of Revenue (preliminary)



As of June 30, 2010, Linfield College's endowment was \$67.2 million.



### 2009-10 Expenditures (preliminary)





## President's Report

### Philanthropy in 2009-10

#### Introduction

Linfield alumni, parents and friends, along with corporations and foundations, contributed more than \$7.6 million to the college in fiscal year 2009-10, the largest total since 2002-03. As is the case every year, charitable gifts supported scholarships for students, academic programs, the library and Wildcat athletics. Thanks to generous gifts and pledges during the year, Linfield was able to begin the renovation of Northup Hall this summer. Every gift to Linfield supports our students and demonstrates the power of a small college. We thank all donors who made contributions during the 2009-10 fiscal year (July 1, 2009-June 30, 2010) and who are listed in the 2009-10 [Honor Roll of Donors](#). If you have a question about your gift history, please contact Gail Ward at 503-883-2546 or [gward@linfield.edu](mailto:gward@linfield.edu).



*Bruce Wyatt*  
Vice President for College Relations



**The value of supporting Linfield comes from seeing the creative success of all the programs at the college – the results are real, visible and exciting. I love being around energetic, mission-driven smart young adults. Linfield is one place I can make a difference.**  
*Kerry Carmody '73, Kerry and Kristie Carmody Endowed Scholarship Fund*

**I believe each of my professors knew me by name and seemed very invested in my academic success. I don't know if you can really put a price on this support! I just received my MS and I feel that Linfield helped me greatly in reaching this next level.**  
*Alumni comment from perception research, illustrating that giving makes possible "The Power of a Small College"*

#### Types of gifts

Total gifts for all purposes in 2009-10	\$7,667,529
Estate and deferred gifts	\$3,483,540
Gifts to capital projects, primarily Northup Hall*	\$1,629,827
Total endowment as of June 30, 2010	\$67,592,612

\*View Northup Hall construction, via [slide show](#) or [web cam](#).

[Honor Roll of Donors](#) 2009-10

More on [philanthropy](#) at Linfield College



## President's Report

### Volunteer Leadership in 2009-10

#### Introduction

More than 100 active volunteers work closely with Linfield College staff to advance our shared mission. They provide professional advice and counsel, oversee critical policy committees, and review the institution's progress on all fronts, from student recruiting and facilities management to academic innovation and fundraising campaigns. They serve as passionate ambassadors for Linfield and return frequently to campus to enjoy the company of our faculty, staff, students and – one another.



**I not only received a first-class education, but also made life-long friends at Linfield, so I proudly volunteer my time and give my financial support to the college. I encourage other alumni to do the same.**

*Sherri (Dunmyer) Partridge '86, member of the President's Circle Leadership Team and the Linfield Magazine Advisory Board*

**Hands-on real world experience is absolutely essential in most fields. Experience leads to greater confidence and an opportunity to make connections, expand skills and see future potential.**

*Comment from perception research, underscoring "The Power of a Small College"*

[Board of Trustees](#)

[Campaign Committee](#)

[Alumni Leadership Council](#)

[President's Circle Leadership Team](#)

[Parents Council Leadership Team](#)

[Business Advisory Council](#)

[Partners in Progress Steering Committee](#)

[Linfield Magazine Advisory Board](#)

#### **Board of Trustees**

*David Haugeberg*

*Chair of the Board of Trustees*

*1982, Attorney at Law, McMinnville, Oregon.*

*Paul Aslanian*

*2007, Professor of Economics, Macalester College. St. Paul, Minnesota.*

*David C. Baca '78*

2008, *Managing Partner, Davis Wright Tremaine LLP. Portland, Oregon.*

*Phillip J. Bond '78*

2005, *President, TechAmerica. Washington, D. C.*

*Sarojini Budden*

2002, *Associate Professor of Pediatrics, OHSU. Portland, Oregon.*

*Kerry Carmody '73*

2008, *Chief Operating Officer, Providence Health & Services. Burbank, California.*

*Pamela (Scott) Claassen '75*

2001, *Chief Financial Officer, American Baptist Homes of the West. Pleasanton, California.*

*Martha B. Cox '72*

1998, *Chief Financial Officer, Columbia Steel Casting Co. Portland, Oregon.*

*T. J. Day '71*

1972, *Chairman and Senior Partner, Dacole Company. Reno, Nevada.*

*Dave Dillon '89*

1996, *Executive Vice President, Oregon Farm Bureau. Salem, Oregon.*

*Leroy Fails '68*

2001, *Vice President, Major Accounts, The College Board. Duluth, Georgia.*

*Lucinda (Day) Fournier '95*

2004, *Retired Teacher, Bend/LaPine School District. Bend, Oregon.*

*Michelle Giguere '78*

2009, *Government Relations Consultant, Ball Janik, LLP. Washington, D. C.*

*Kent Harrop*

2001, *Pastor, First Baptist Church. McMinnville, Oregon.*

*Thomas L. Hellie*

2006, *President, Linfield College, McMinnville, Oregon.*

*Kellanne B. Henry '83*

2008, *Investment Director, Schnitzer West LLC. Seattle, Washington.*

*Pamela L. Jacklin*

2005, *Attorney, Stoel Rives LLP. Portland, Oregon.*

*David R. Jubb '71*

1994, *Vice Chairman & General Counsel, Reser's Fine Foods, Inc. Beaverton, Oregon.*

*Glenna (Foley) Kruger '68*

1993, *Retired Human Resources Project Manager, Intel Corporation. Hillsboro, Oregon.*

*Ronni Lacroute*

2007, *Proprietor, Willakenzie Estate. Yamhill, Oregon.*

*Gary Magnuson '73*

2000, *SVP-Wealth Management, Morgan Stanley Smith Barney. Seattle, Washington.*

*Michael G. McBride '72*

1996, *General Partner, JTM FLP, Real Estate and Development. Twin Falls, Idaho.*

*Mahmood Momtazi*

2002, *Owner, Tecna Industries, Inc. McMinnville, Oregon.*

*Christopher Norman '10*  
2009, Student, Linfield College. McMinnville, Oregon.

*Daniel O'Leary '86*  
2004, Professor of Chemistry, Pomona College. Claremont, California.

*Mark Patterson '88*  
2009, Managing Director, Nwq Investment Management, Los Angeles, California.

*Timothy C. Phillips*  
2007, Pastor, Seattle First Baptist Church. Seattle, Washington.

*Debra Seifert '76*  
2003, owner, Debra Seifert Communications, Portland OR

*Larry Sims*  
1993, Retired Environmental Engineer, PACCAR, Inc. Bellevue, Washington.

*Delford M. Smith*  
1975, Founder, Owner and Chairman, Evergreen International Aviation. McMinnville, Oregon.

*Thomas L. Sutro '71*  
2001, Manager, Altera Real Estate. Huntington Beach, California.

*Sandra A. Thompson '68*  
2004, Judge, Los Angeles Superior Court, Torrance, California.

*Douglas Tunnell*  
2008, Proprietor, Winemaker, Brick House Vineyards. Newberg, Oregon.

*Bernard L. Turner*  
1989, Retired Pastor, First Baptist Church. McMinnville, Oregon.

*Brian Winkenweder*  
2009, Associate Professor of Art, Linfield College. McMinnville, Oregon.

*Richard E. Withnell '64*  
1990, Chairman of the Board, Withnell Motor Company. Salem, Oregon.

*Donna Woolley*  
1990, President, Eagle's View Management. Eugene, Oregon.

### **Campaign Committee**

David Baca '78  
Vicki (Chicks) Boatsman '92  
Kerry Carmody '73  
T.J. Day '71  
David Hansen  
David Haugeberg  
Thomas Hellie  
Glenna (Foley) Kruger '68  
Michael McBride '72  
James Reimann  
Marshall "Rocky" Wade '75  
Richard Withnell '64  
Donna Woolley  
James Daniel (counsel)



### **Alumni Leadership Council**

Lynn DeWard '83  
Muriel (Hunt) Dresser '59  
Nancy (Steinbach) Haack '69  
Sean Hoar '80  
Jeanine Ishii '03  
Sonny Jepson '73  
Brian Lawrence '99  
Jason Little '07  
Nancy (Foster) McCollum '75  
Marsha (Cooper) Moore '99  
Brian Petrequin '94  
Garlinn (Hansen) Story '69  
Robert Zuleger '53  
More on [alumni activities](#)

### **President's Circle Leadership Team**

Debra Seifert '76, chair  
Mike Colvin  
David Dillon '89  
Lee Howard  
John Hubbard '62  
Judy (Jandrey) Hubbard '63  
Bob Martyn '52  
Terry K. (TK) Olson '57  
Jeff Owens '79  
Jon Owens '06  
Sherri (Dunmyer) Partridge '86  
Robert Stewart '66  
More on the [President's Circle](#)

### **Parents Council Leadership Team**

Laura Edman, chair  
Ann Kough  
Greg and Lori Cody  
Karen Maguire  
Tom McHenry and Elena Phleger  
Tony and Linda Uphoff  
Jeff and Shelly Schur  
Dana Vandecoevering  
More on the [Parents Council](#)

### **Business Advisory Council**

Dick Withnell '64, chair  
Larry Baker '64  
Wayne Case '62  
Linda (Adams) Case '68  
John Davidson '78  
Brian Gerritz '98  
Kellanne Henry '83  
Michelle Johnston Holthaus '96  
Mike Keyes  
Steve Marshall '86  
Scott Nelson '94  
Rob Owens '94  
David Rath '01  
Matt Vance '99

### **Partners in Progress Steering Committee**

Carole Burcham, chair  
Kathleen (Yonkers) Bernards '76  
Chris Browne  
Wendy Buchheit  
Dan Davison '03  
Sherl Hill  
John McKeegan  
Erin Stephenson  
Harold Washington  
David Wiegand '85  
More on [Partners in Progress](#)

### **Linfield Magazine Advisory Board**

Dick Hughes '75  
Laura Graham '07  
Chris Miles '06  
Sherri (Dunmyer) Partridge '86  
Larry Roby  
David Sumner  
More on [Linfield Magazine](#)